

THE Econoplate



London
Climate Hire

Content

Introduction to the Econoplate PPHE	3
Control panels	4
3 Port range	6
2 Port range	6
Steam range	7
Upgrades and accessories	7



The Econoplate by Stokvis:

The newest, industry-leading packaged plate heat exchanger, designed to provide heating and hot water to Industrial and Commercial buildings.

Stokvis Energy Systems is the leading name in commercial and industrial heating and hot water products, and we've taken our best ever packaged plate heat exchanger and made it even better.

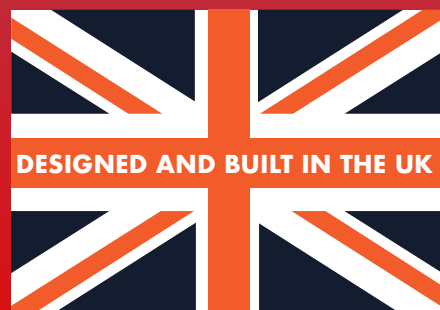
- It's more intelligent
- It's more intuitive
- It's more flexible and its WRAS approved.



The Econoplate is a ready-made solution in one compact package. All required control components such as valves and pumps are pre-selected and installed, perfectly complementing the required heat loads and duties of the system.

Due to the flexibility of the Econoplate packaged plate heat exchanger, it's the perfect solution for almost any application, including steam to water (SW), domestic hot water service (DHWS), low temperature hot water (LTHW), and medium temperature hot water (MTHW).

Simple, Dependable, Proven.



How does the Econoplate work?

Econoplate units transfer heat from one medium to another. They only require the two fluids (or steam) to make a single pass through the heat exchanger in opposing directions, whilst the control components continuously monitor and regulate to ensure the desired output and efficiency is achieved. This method is simple, efficient and delivers proven results.

The Econoplate has a very low water content, this allows for fast reaction times to varying duties or heat loads, and the risk of legionella is virtually eliminated.

A huge benefit to the Econoplate is its retrospective flexibility. If your heating or hot water demand increases or decreases in the future, the unit can be adapted to suit.

What makes it the best Packaged Plate Heat Exchanger?

We've invested time, experience and technology in to our latest Econoplate, and we promise that it's the most efficient, smart, easy to use product of its kind. We've been supplying the Econoplate for over 30 years, and in that time, we've become leaders in commercial and industrial heating – evolving our products and keeping them at the forefront of performance and efficiency.

The Econoplate by Stokvis offers:

- Touchscreen technology – it's never been easier to operate and monitor a packaged plate heat exchanger, thanks to our new, state of the art 7" full colour digital display option
- Full BMS connectivity via Modbus
- Multi point monitoring for ease of access to performance data and early identification of wider system issues
- Output ratings from 50kW to 1100kW per unit
- A number of models available, with DHWS, LTHW, MTHW and SW options
- Adjustable high and low temperature alarms
- Selectable high temperature lockout modes with built in manual reset limit stat
- Single or twin head primary pump options
- Optional secondary recirculating or transfer pump
- Custom/tailored designs available on request

Econotrol Control Panels

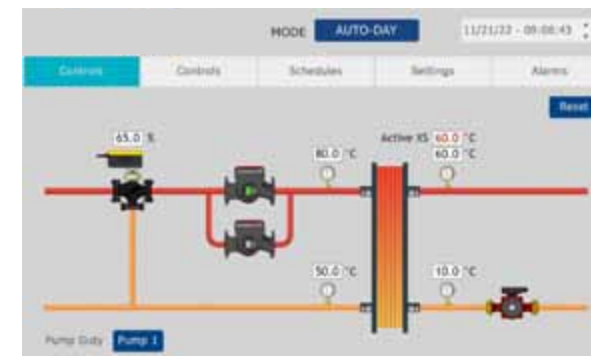
Lying at the heart of the development of our most recent Econoplate software, was our desire to create a market leading, but simple and stress-free user interface experience. This has been coupled with a drive to expand the capabilities and possibilities of a plate heat exchanger control panel. Everything from basic procedures such as commissioning and altering set points, through to more complex procedures such as schedule setting and alarm point setting have been designed with ease of use and access in mind. With full BMS connectivity and integration on all models, and an ability to identify system faults early on via the enhanced monitoring system, this is a truly intelligent control panel.

There are two options of control panel available on the Econoplate. This allows for greater flexibility in terms of user interface, and specific site requirements.



Econotrol T2:

Our T2 touch screen controller offers a user interface like no other on a packaged plate heat exchanger. With a 7", full colour, touch screen display, this unit truly takes the Econoplate into another class. The home screen displays a model relevant graphic showing continuously monitored performance data, such as flow and return temps on primary and secondary, primary pressure on steam models, valve open percentage, pumps run and duty standby. Hi-limit and lockout alarms are also displayed with a visual representation of the source.



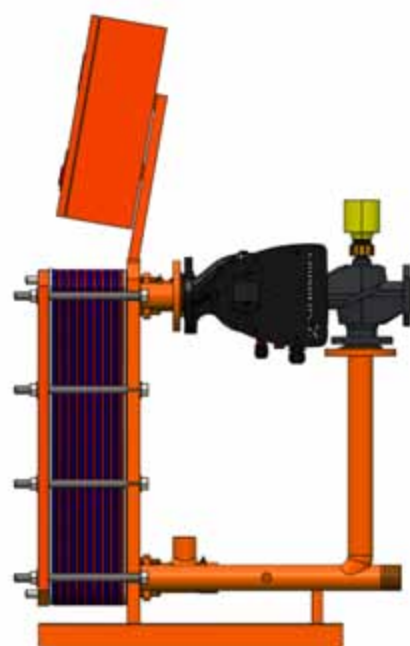
Econotrol T1:

Our T1 controller comes as standard on all models and variants of the Econoplate Packaged Plate Heat Exchanger. This unit offers a simple graphic based home screen, with a menu of options giving access to every level of functionality, management, and monitoring.



The Econoplate by Stokvis is available in various configurations, with over 250 models to choose from.

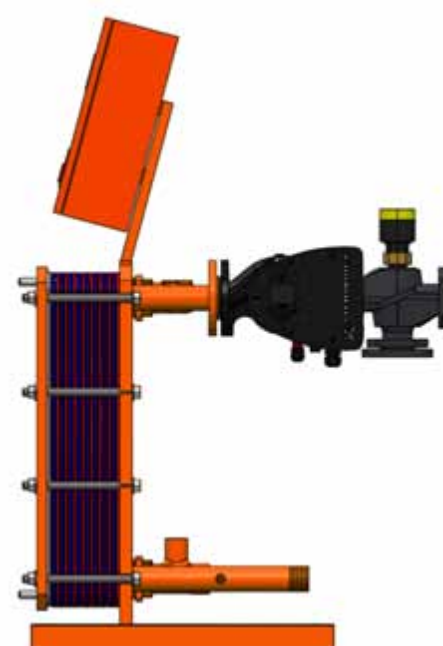
3 Port Range



3 port Econoplate packaged plate heat exchangers are the most commonly used variant of the range. This is due to their suitability for a wide range of applications, vast adaptability, and their huge flexibility of performance. 3 port models are also particularly effective at handling rapid changes to demand and temperature, making them the most effective option for instantaneous DHWS.

- Primary operating temps from 60°C to 110°C
- Operating pressure up to 10 bar
- Heat load duty from 50kW to 1100kW
- 3 port fully modulating, fast acting control valve
- Single or twin head primary pump options
- Optional temperature monitoring on all four heat ex connections
- Optional secondary transfer or recirculating pump
- T1 and T2 control panel options available

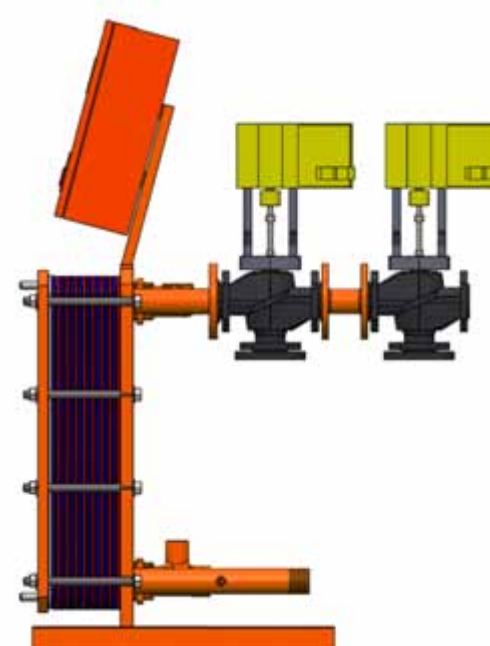
2 Port Range



The 2-port Econoplate is a fully flexible platform used for varying applications. The 2-port configuration lends itself well to and is often positioned in conjunction with a buffer vessel to support rapid stored hot water regeneration and provide a continuous flow rate once the stored water has been depleted. This unit is also particularly effective for heating systems that require close monitoring and balance of temperatures.

- Primary operating temps from 60°C to 110°C
- Operating pressure up to 10 bar
- Heat load duty from 50kW to 750kW
- 2 port fully modulating, fast acting control valve
- Single or twin head primary pump options
- Optional temperature monitoring on all four heat ex connections
- Optional secondary transfer or recirculating pump
- T1 and T2 control panel options available

Steam Range



When you have the option and availability of Steam, the steam Econoplate is the perfect option for fulfilling your heating or hot water needs. With the ability to transfer heat load efficiently and effectively from steam to the desired secondary medium with a single pass, and a range of models up to 1000kW, this is a truly unique packaged plate heat exchanger.

- Primary operating temperature up to 140°C (2.6 bar)
- Secondary operating pressure up to 10 bar
- Heat load duty from 50kW to 1000kW
- 2 port fully modulating, fast acting control valve
- Twin valve - Optional COPF hi-limit valve
- Pressure monitoring on primary
- Optional temperature monitoring on primary return (condensate)
- Optional temp monitoring on secondary flow
- Optional secondary transfer or recirculating pump
- T1 and T2 control panel options available

Upgrades & Accessories



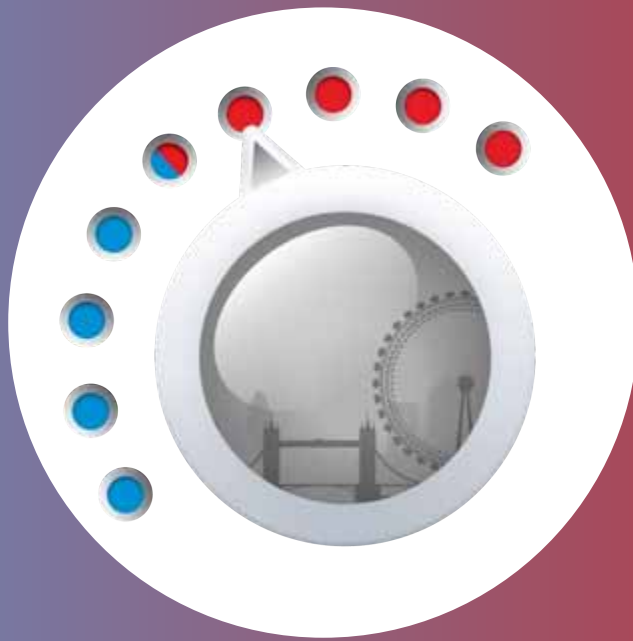
Secondary Recirculating Pump



Secondary Transfer Pump



Twin Head (Duplex) Primary Pump



0800 270 7006

info@londonclimatehire.co.uk