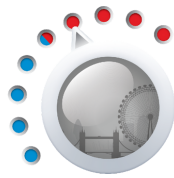
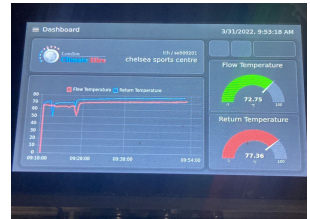


SCAN ME



London
Climate Hire

600kw Condensing Boiler Plant Room



CONTACT US
0800 270 7006

VISIT WEBSITE
londonclimatehire.co.uk

UNIT SPECIFICATION:

- Bespoke frame (W) 2,400mm X (L)2,600mm X (H)1,800
- 4 X 150kw ideal evo max 2 boilers
- Primary pump sets secondary pump set 80/120 13l/s
- Associated safety devices and interlocks
- Secondary side pressurisation unit
- Primary side expansion
- Engineer's digital touchscreen (Plant operation history)
- Remote boiler login and alarm alerts
- Sensor lighting
- Engineer QR code with full boiler internal spec / wiring diagram
- HTG 4" outlets F/R
- Gas connection 2"
- 32amp single phase commando

BOILER COMPLETE WITH ANCILLARIES

- 4" Stainless steel flexible pipework HTG
- 4" Stainless steel flexible pipework GAS
- 32amp single phase SY Flex cable
- Heras fence compound

Application

- District heating
- Small / large estates
- Schools
- Hospitals
- Retirement properties
- Swimming pool heating

User

- Maintenance and engineering
 - Facilities management
 - End user
 - Cross hire users
- (LCH signage removed on request)

